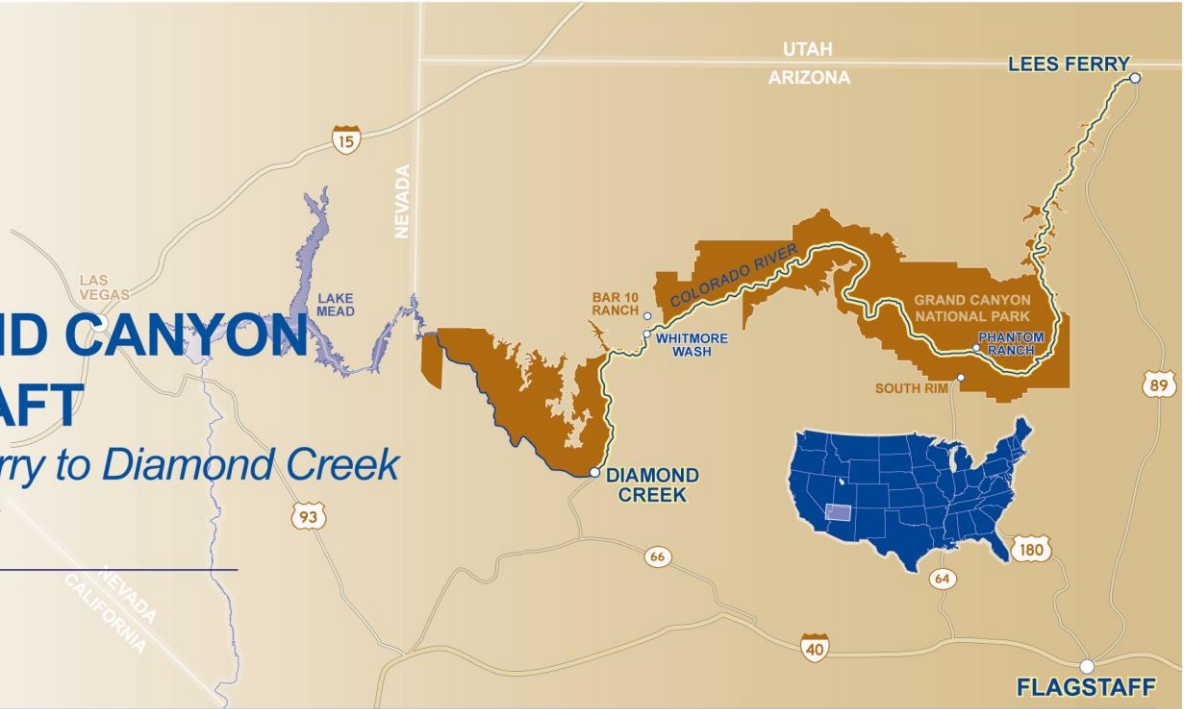




# GRAND CANYON BY RAFT

*Lees Ferry to Diamond Creek  
Itinerary*



<b>MEETING PLACE:</b>	Radisson Woodlands Hotel, Flagstaff, Arizona
<b>MEETING TIME:</b>	7:00 PM, the evening <u>prior</u> to your trip
<b>RETURN TIME:</b>	Approximately 2-3:00 PM
<b>RIVER RATING:</b>	42 major rapids rated 5 or above on the Grand Canyon scale of 1 to 10
<b>RIVER MILES:</b>	225
<b>PUT-IN:</b>	Lees Ferry
<b>TAKE-OUT:</b>	Diamond Creek
<b>TRIP LENGTH:</b>	13-16 days
<b>AGE LIMIT:</b>	Minimum age is 12 years old
<b>WEIGHT LIMIT:</b>	260 pounds. If you exceed this weight, please give us a call.
<b>BOAT TYPE:</b>	We raft the river in 18' inflatable rafts that hold 4 passengers and a guide. The guide rows the raft with a long pair of oars.

Covering 225 river miles, this trip offers all the scenery, side canyons and whitewater excitement of our full canyon trip with the glories of Marble Canyon, the mysteries of the Inner Gorge, terrific side hikes and Indian ruins, crystalline creeks and waterfalls, cactus gardens and whitewater galore. We explore the numerous side canyons, which crisscross this magnificent region, each having its own unique attractions, just waiting to be discovered. Our last night is spent camping in the shattered Hurricane fault zone before we head to Diamond Creek for our take-out.

### **AWARD-WINNING NATURE-BASED ADVENTURES SINCE 1969**

O.A.R.S. has been in business for over 40 years and that is no accident. Great trips on some of the world's best rivers and coastlines are the recipe for this success. Always focused on our clients and their vacations, it is our genuine belief that river trips and nature-based adventures are extremely valuable life experiences. With that as our foundation, we have committed ourselves over the years to providing the best trips available, always with an eye on improvement.

## **BOAT TYPE**

- On our Grand Canyon trips we use inflatable oar rafts, the most stable of whitewater craft, which are rowed from the center of the boat by your guide. Our rafts carry four passengers and a guide plus gear. We travel in a flotilla with the maximum group size of 16-20 passengers.

## **WHITEWATER**

- There are 42 rapids rated 5 or higher on the Lees Ferry to Diamond Creek section. Whitewater in the Canyon is rated on a scale of 1 – 10 (unlike most western rivers which use the I – VI scale). A "1" is a small riffle, and a "10" is the most difficult rapid still considered runnable. The two most noted of the Colorado's rapids, Crystal and Lava Falls, are both rated a 10. The intensity of all rapids naturally depends on the water level, so readings for low and high water levels may vary slightly.
- Based on various circumstances such as water levels and current flow we occasionally find it necessary to have our passengers walk around certain rapids. The decision is made by the trip leader with the first concern being the safety of each passenger and secondly the ability to run a rapid without damaging the boats. This will give you a great opportunity to take some wonderful photos of the rafts as you watch your guides demonstrate their boating skills. When conditions warrant, you may also be asked by your trip leader to wear a helmet. For your own safety, however, you may feel more comfortable with wearing the helmet even more than specifically requested by the trip leader.

## **HIKES ALONG THE RIVER**

- Each day varies, but on average you'll spend three-five hours on the boats. The rest of the time is spent hiking and exploring side canyons, eating, or just relaxing in camp. The easiest hikes are no more difficult than negotiating a few yards of beach sand or stepping over a few rocks. Others may go for several miles over a rough trail, climb steeply up a hot hillside, require the use of both hands over awkward boulders and demand caution as you totter on a narrow trail above a steep cliff. Our guides are happy to help novices with hand and footholds and reassurance. Many times their helpfulness enables the timid and inexperienced to get to special places that many other groups pass by. Remember, however, all hikes are optional and you can choose to relax and take in a few tanning rays or read a book instead.

## **Sample Itinerary**

We pride ourselves in running a relaxed and always flexible schedule. Every trip is different depending upon the group, other trips on the water and the occasional effects of the weather. ***Please refer to your confirmation letter for the exact dates of your trip.*** The following is a sample of what your trip might be like:

### **The Day Before Your Trip. . .**

- We'll meet at 7:00 PM at the Radisson Woodlands Hotel in Flagstaff for a pre-trip meeting. This is an opportunity to meet your fellow travelers and guides and ask any last-minute questions. Your guides will give you a thorough trip orientation and then pass out your waterproof river bags so that you can pack your belongings that evening.

### **Your Trip Begins. . .**

- At 7:00 AM you'll board our van at the Radisson Woodlands Hotel. By this time your waterproof bags should be packed, luggage stored, cars parked, breakfast eaten and room keys turned in. Our van will drive you to Lees Ferry (2½-hour drive) where we'll load the rafts, give a river safety talk and fit you with a personal flotation device (PFD) before putting on the river. Our apprehensions are quickly converted to exhilaration as we splash through Badger & Soap Creek Rapids. The desert's warmth quickly dries us again before we reach camp. After a delicious dinner we stretch out in our sleeping bags to drift off to sleep under a starry sky.

## The Adventure Continues. . .

- The river twists between rising cliffs, offering new vistas at every bend. At North Canyon we walk across folded layers of sedimentary rock which leads to a pool trickling down from the polished funneled canyon. Our afternoon of lazy drifting is enlivened by the rapids of the “Roaring Twenties.”
- Vibrant colored walls of Marble Canyon tower overhead as we continue our float past the fern-fringed springs of Vasey’s Paradise for a stop at Redwell Cavern. This vast half-circular chamber, carved out by the river, offers a cool recess to rest. A few miles down river we scramble over short steep rock formations into Nautiloid Canyon where we find a unique display of fossils exposed in the smooth rock canyon floor.
- Relaxed drifting occupies much of this day interspersed by few good rapids. A stop at Nankoweap Canyon gives us an opportunity to climb to the Anasazi Indian granaries that rest high on the cliff overlooking the Colorado River for a spectacular view of the river and vibrant canyon hues below. If we are lucky, the Little Colorado will be flowing with opaque turquoise (instead of muddy brown) water, which will invite us to stop for a swim.
- For a few miles the canyon opens up, revealing ancient volcanic rocks and the cliffs of the South Rim. We then go through a series of challenging rapids which drop us into the narrow, rugged trench of the Inner Gorge. We’re drenched in turn by the big waves of Unkar, Nevills, Hance, Sockdolager and Grapevine rapids. We arrive at Phantom Ranch where we may trade partial trip passengers. While we’re trading “uppers” for “lowers” you’ll have time to shop for goodies and postcards at Phantom Ranch. Postcards mailed from Phantom Ranch bear the postmark, “Carried by mule from the bottom of Grand Canyon.”
- Sensational rides and dramatic pictures are produced in Granite, Hermit and the rapids of the “Jewels” – Crystal, Sapphire, Turquoise, Ruby and Serpentine. We camp after a refreshing swim in the pools and waterfall at Shinumo Creek.
- Those with sharp eyes and quick cameras may be rewarded with shots of desert bighorn sheep in this portion of the Canyon. The emerald paradise of Elves Chasm, with its chain of linked pools and waterfalls, invites us to explore and swim. A sand and gravel floor serpentine through the cool narrow slot of Blacktail Canyon. Here we have an up close look at the Great Unconformity where ancient erosion removed millions of years of rock to create a gap in the Canyon’s geologic record.
- Fluted walls of jet black schist enclose us for a few miles before Bedrock and Dubendorf rapids. We drift lazily through Granite Narrows (a mere 65’ wide!!) and soon come to Deer Creek Falls, a 125’ cascade that tumbles almost directly into the river. A hike above the falls brings us to an oasis with a huge open patio. En route we discover handprints on the side canyon walls, evidence of those that visited this canyon centuries ago.
- We begin our morning gliding through some calmer stretches of river as we marvel at the walls towering overhead. A few quick strokes of the oars pull us into the mouth of Matkatamiba Canyon. We venture up the narrow limestone slot canyon into an overhanging amphitheater. Wading through the warm waters we explore the beautifully carved channel and relax in the coolness of its grotto. Back on the river we conquer Upset Rapid and then stop to camp for the night.
- Before sunrise we snack on yogurt and granola while packing sandwiches, fruit and candy for our lunches. An early start gives us a long day to enjoy the blue-green pools and numerous waterfalls of Havasu Canyon. Some linger all day at the pools near the river while others hike to see the falls several miles away. (A day pack or fanny pack are a “must” on this day.) After dinner the evening stars pale as our guides tell us tales (some real, some perhaps only “tall”) of the Colorado’s most legendary stretch

of whitewater, Lava Falls. Tomorrow comes our turn in this fabled rapid.

- Pulling our rafts to shore, we follow a short, steep trail to scout this whitewater giant. Each raft in turn is swept into the churning, spitting power of the largest rapid in the Grand Canyon, battered by huge waves and flushed into calmer waters. Knuckles still white, we beach below the rapid to laugh at our fears and relive each shudder.
- Today we pass Whitmore Wash. Pictographs can be found under a rock overhang a short distance from the river. As the canyon opens up we cross into the shattered Hurricane fault zone and then head west.
- 205, 209 and 217 Mile rapids discount the myth that all the *good* whitewater occurs above Whitmore Wash. We spend a delightful, splashing, fun-filled day discovering this.

### **The Last Day of Your Trip**

- Still in our sleeping bags, we watch the sunrise brighten the cliffs above our camp. Hours have long since ceased to matter and the days blend together now as well. Rapids and side canyons stand out in our memories, but have lost their places in time. A sense of sadness fills us as we round that last bend and reach Diamond Creek. After loading and de-rigging the boats we board the van, which carries us across the reservation to Peach Springs and then returns us to the Radisson Woodlands Hotel in Flagstaff, arriving between 2:00 and 3:00 PM.

### **What's Included?**

- Transportation by van from Flagstaff to put-in at Lees Ferry and return from Diamond Creek
- Expedition equipment, including highest quality rafts, two-person shared tent, personal flotation device (PFD), helmet, waterproof bags, camp chair as well as eating utensils, plates and cups
- Skilled, professional, experienced guides
- Meals from lunch on Day 1 to lunch on your last day

### **What's Not Included?**

- Transportation to and from Flagstaff
- Pre- and post-trip accommodations and meals
- Grand Canyon National Park Entrance Fee
- Items of a personal nature (an equipment list will be provided)
- Sleeping bags and pads (these items may be rented from O.A.R.S.)
- Insurance of any kind, including travel insurance
- Alcoholic beverages
- Gratuities

### **SOMETHING VOLUNTARY**

- In reviewing your statement, you'll notice a \$1/person/river day donation to the Grand Canyon Fund for River Conservation, an environmental trust fund. Your contribution will be deposited with the foundation, through which grants are distributed to organizations such as the Grand Canyon Trust, Friends of the River, etc. This donation is voluntary and may be removed from your invoice if you choose not to participate. Please notify our office to delete the donation from your balance.
- The O.A.R.S. Foundation is a not-for-profit 501 (c) 3 organization with the express goal of providing opportunities for young people to experience the magic of a river trip. Visit [www.oarsfoundation.org](http://www.oarsfoundation.org) to learn more about how your tax deductible donation can change young lives for the better.

## Terms and Conditions

### Reservations and Deposits

- We require a deposit of \$750 per person for all Grand Canyon trips, by check or money order only.
- \$500 is due in our office within 10 DAYS of your initial reservation; the remaining \$250 must be paid by November 1 of the year prior to your trip.
- If you make your reservation after November 1 of the year prior to your trip, the entire \$750 deposit is due in our office within 10 DAYS of your initial reservation.
- **Please note: We do not accept credit cards for Grand Canyon river adventures.**

### Final Payment

- Statements will be mailed in ample time to remind you of the payment due date.
- Final payment of all trip costs is due in our office, not less than 90 days prior to the departure date of your trip. Accounts on which final payment has not been received 80 days prior to the departure date will be **CANCELLED** without exception.

### Cancellations and Refunds

- If you find it necessary to cancel your trip, please notify us as soon as possible. The cancellation fee after you've made your deposit can range from \$250 up to the entire trip cost, based upon the number of days prior to your trip that we receive your cancellation notice. We regret we cannot make exceptions for personal emergencies. For this reason, **we strongly urge you to investigate trip insurance** (see Insurance).

#### Date of Cancellation

360 or more days prior to your trip  
359 to 180 days prior to your trip  
179 to 90 days prior to your trip  
89 days or less prior to your trip

#### Cancellation Fee\*

\$250/person  
\$500/person  
\$750/person  
Full Fare

\* **If you are traveling as part of a charter group** please note that deposit/cancellation policies differ from those listed above. Charter Policies can be found on the group leader's contract & on the Charter Trip Visitor's Acknowledgement of Risk Form.

### Medical

- Under most circumstances, if you are of an adventurous spirit and in reasonably good health, you should have no problem enjoying an O.A.R.S. Grand Canyon, Inc. trip. People with heart trouble and pregnant women should have their physician's approval before taking an adventure travel trip.

### Insurance

- Although every effort is made to insure a safe trip for all, we strongly recommend that you protect yourself, your belongings, and your vacation through the purchase of a short-term traveler's policy. A trip cancellation policy covers your non-refundable payments in most cases, should you have to cancel your trip due to illness or injury – yours or that of an extended family member – even at the last minute. Trip participants should realize that in the event you require extensive medical attention and need to be evacuated from the canyon, or in the unfortunate circumstance of the death of an immediately family member and the National Park Service (NPS) is requested to notify you by helicopter – the NPS charges the expense of the helicopter service to the individual involved. Obviously, no one wants or expects a helicopter to become necessary during their trip, but the service can be difficult and expensive. Consequently, we encourage you to secure the insurance that we offer or other alternative insurance that can cover this possible expense. Personal belongings and cameras are carried entirely at the owner's risk, and O.A.R.S. Grand Canyon, Inc. accept no responsibility for lost, damaged, delayed or stolen property.

### One Trip per Year Rule

- Grand Canyon National Park Service regulations prohibit individuals from participating in more than one recreational river trip (commercial or non-commercial) per year on the Lees Ferry to Diamond Creek section of the Colorado River. Because of this regulation, O.A.R.S. Grand Canyon, Inc. cannot accept a reservation from any individual who has or will participate in any other full or partial canyon commercial or non-commercial river trip within the same calendar year. If you have already completed or have plans to participate in any other Grand Canyon river trip during the same year you are traveling with us and would like to go again, please wait until the following year or later for your next trip. Grand Canyon National Park's one-trip-per-year rule is strictly enforced by the National Park Service.

### Acknowledgement of Risk

- Everyone is required to sign a standard Acknowledgement of Risk form before the trip, acknowledging awareness that some risks are associated with the trip. Safety is of the utmost concern on our trips. However, due to the nature of the activities, a condition of your participation is that you will sign this form and return it to our office before the trip begins. Anyone who

refuses to sign the form will not be allowed to participate, and consistent with O.A.R.S. Grand Canyon, Inc. cancellation policy, there will be no refund of the trip fees at that time.

**Responsibility – An Important Notice**

- O.A.R.S. Grand Canyon Inc. and cooperating agencies act only in the capacity of agent for the participants in all matters relating to transportation and/or all other related travel services, and assume no responsibility however caused for injury, loss or damage to person or property in connection with any service, including but not limited to that resulting directly or indirectly from acts of God, detention, annoyance, delays and expenses arising from quarantine, strikes, theft, pilferage, force majeure, failure of any means of conveyance to arrive or depart as scheduled, civil disturbances, government restrictions or regulations, and discrepancies or change in transit over which it has no control. Reasonable changes in itinerary may be made where deemed advisable for the comfort and well being of the participants, including cancellation due to water fluctuation, insufficient bookings and other factors. There is risk in whitewater rafting, particularly during high-water conditions. Rafts, dories and kayaks do capsize. You could be swept overboard. Your guide will make every attempt to assist, but you must be strong and agile enough to “self-help” and “float-it-out” without further endangering yourself or others. We reserve the right not to accept passengers weighing more than 260 pounds or with a waist/chest size exceeding 56 inches. We may decide, at any time, to exclude any person or group for any reason we feel is related to the safety of our trips. We are experienced at accommodating people with various disabilities. Please give us an opportunity to make you feel welcome. We need to discuss any special requirements ahead of time. On advancement of deposit the depositor agrees to be bound by the above recited terms and conditions. Prices subject to change without notice.

2011 O.A.R.S. Grand Canyon, Inc. 12/30/11 JP